



MILLER'S

TEXTILE SERVICES

"We show up on time, do what we say,
finish what we start... and have fun doing it."



800-826-3164

WWW.MILLERSTEXTILE.COM

For over 75 years, our team at Miller's Textile Services has been committed to serving the uniform, linen and facility service needs of the Midwest. Our customers and employees feel like a true extension of our family-owned business with an emphasis on reliability above all. Service may be our last name, but it is our first priority.

At Miller's, our focus is on delivering exceptional experiences daily to each of our customers. We'll work to figure out your needs and then customize a program for all of your uniforms, linens and towels, healthcare, mats, facility services or other promotional items. Whether you work in a healthcare or senior living, a restaurant or hospitality service, the manufacturing or automotive industry, or any other line of business, our promise is the same: We show up on time, do what we say, finish what we start... and have fun doing it. It sounds simple enough; but in our line of work, there's a clear difference.

We also take hygienically clean to a whole new level. We're the second laundry in the United States to have earned the "Triple Crown" of Hygienically Clean Certifications from the Textile Rental Service Association (TRSA). These certifications for Hygienically Clean Healthcare, Food Service and Food Safety are based on continuous third-party quantified biological testing and inspection, verifying our clean textiles meet appropriate hygienic standards and best management practices.

Miller's Vision

ATTRACT THE BEST TO SERVE THE BEST

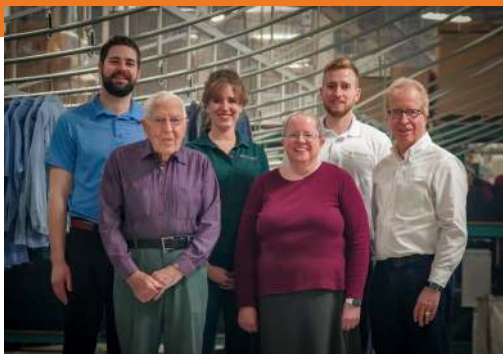


TABLE OF CONTENTS

<i>Pants.....</i>	<i>4-6</i>
<i>Flame Resistant Pants.....</i>	<i>7</i>
<i>Demin.....</i>	<i>8</i>
<i>Polo Shirts.....</i>	<i>10-11</i>
<i>Shirts.....</i>	<i>12-15</i>
<i>Flame Resistant Shirts.....</i>	<i>16</i>
<i>Food Grade.....</i>	<i>18-19</i>
<i>Table Linens.....</i>	<i>20</i>
<i>Napkins.....</i>	<i>21</i>
<i>Mats.....</i>	<i>22-23</i>
<i>Towels.....</i>	<i>24</i>
<i>Floor Mops.....</i>	<i>25</i>
<i>Hospitality.....</i>	<i>26</i>
<i>Healthcare.....</i>	<i>27</i>
<i>First Aid.....</i>	<i>28</i>
<i>Air & Facility Care.....</i>	<i>29</i>
<i>Hand Cleaners.....</i>	<i>30-31</i>
<i>Chemicals.....</i>	<i>32-33</i>
<i>Paper Hand Towels.....</i>	<i>34</i>
<i>Toilet Tissue.....</i>	<i>35</i>

Can't find what you're looking for?

CONTACT US!

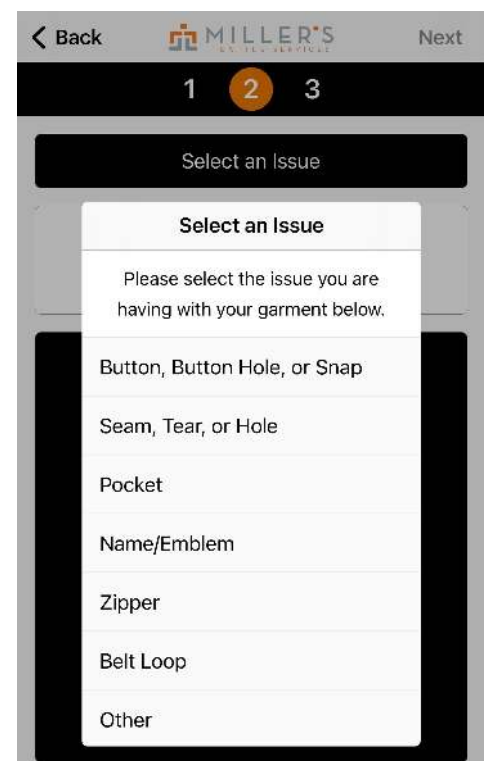
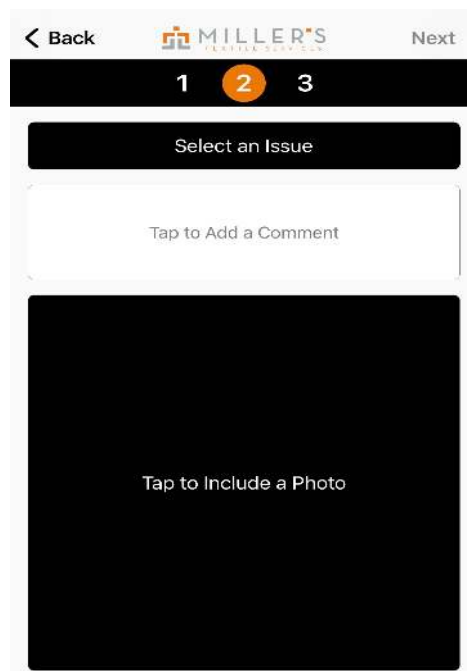
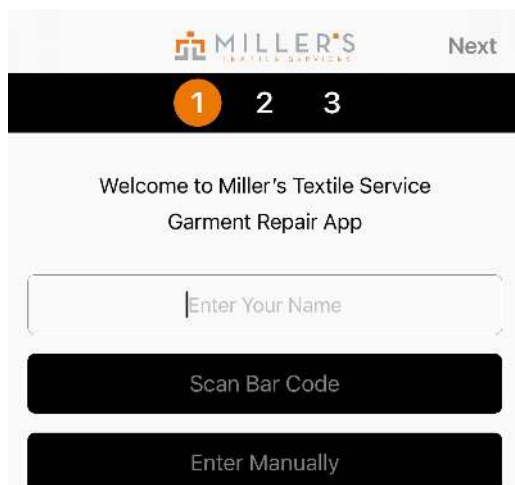
Miller's Textile Services and the Hager family (including a third generation of Hagers who are a part of the team) continue their tradition of excellence. They remain committed to serving communities like yours throughout the Midwest and are excited for the years to come.

GARMENT REPAIR APP



With our repair app you can help us provide better service in less than a minute by telling us about any repairs your garments may need. Here are the simple steps:

1. Download the Miller's Textile Services App from your mobile phone's App Store or Google Play.
2. Enter your name and either Scan your bar code in the garment or Enter manually.
3. Select the Issue you're having & snap a photo and send!





UTILITY PANT WITH MIMIX™



The Utility Pant uses built-in MIMIX™ flex panels to provide superior flexibility and breathable comfort fit. Touchtex™ technology provides superior color-retention and stain-resistance capabilities. **65% Polyester/35% Cotton (Body), 93% Nylon/7% Spandex (MIMIX® Panels)**

- Two slack-style front pockets, two set-in hip pockets and left pocket has button closure

PX60



Navy



Black*



PERFORMANCE SHOP PANT

The Performance Shop Pant has it all. Durability and breathability thanks to Touchtex™ technology, covered buttons that won't scratch, and an inseam gusset and stretch waistband for maximum comfort all day long. **54% Polyester/42% Cotton/4% Spandex**

PT2A



Khaki



Black*

(women's - PT3A)



Navy



DURA-KAP INDUSTRIAL PANT

Touchtex™ technology with superior color retention and soil release. Traditional easy fit. Folder-set waistband with outlet and button closure for a comfortable fit. Slack style front pockets, two set-in hip pockets, left pocket has button closure. **65% Polyester/35% Cotton**

- Touchtex Pro™ technology provides breathable comfort, lasting colors and stain resistance with an even softer feel
- TruBlack Fabric resists fading wash after wash
- Synthetic blend pocketing and waistband trim

PT20



Khaki



Brown



Spruce Green



Navy*



Charcoal



Black

(women's - PT21)



White

* = Color Shown



WRINKLE-RESISTANT COTTON WORK PANT

Easy fit. Folder-set waistband with outlet and button closure. Slack-style front pockets; left pocket has button closure. **100% Cotton**

- Easy fit wears well no matter what the task
- Plenty of pockets to store the tools of the trade
- Synthetic blend pocketing and waistband trim

PC20



Khaki



Brown



Navy



Charcoal*



DICKIES' INDUSTRIAL CARGO PANT

Relaxed fit. Six total pockets, including two roomy cargo pockets that have a hidden zipper closure



Charcoal*

LP39CH - 100% Cotton

LP72CH - 65% Polyester/35% Cotton



INDUSTRIAL CARGO PANT

Touchtex™ technology with superior color retention and soil release. Updated utility-style cargo pants offer an east fit. Slack-style front pockets and two set-in pockets; left pocket has button closure. Two bellow cargo pockets with pocket flaps and nap closures. **65% Polyester/35% Cotton**

- Touchtex Pro™ technology provides breathable comfort, lasting colors and stain resistance with an even softer feel
- TruBlack Fabric resists fading wash after wash
- Synthetic blend pocketing and waistband trim

PT88

(women's - PT89)



Khaki



Navy



Charcoal



Black*





PLEATED TWILL SLACK



Made from twill fabric featuring Touchtex™ technology to give them superior color-retention and stain-release capabilities. Resists fading wash after wash, while providing breathable comfort, lasting colors and stain resistance.

65% Polyester/35% Cotton

- Plenty of pockets to store the tools of the trade
- Double front pleat

PT38



Khaki



Charcoal*

(women's - PT39)



Navy



Black



ELASTIC INSERT WORK PANT

Tackle the toughest jobs with improved mobility and comfort while wearing the Elastic Insert Work Pant. Their durable twill fabric has superior soil-release and color-retention technology to resist fading wash after wash. Easy fit wears well no matter what the task. **65% Polyester/35% Cotton**

- Touchtex™ technology provides breathable comfort, lasting colors and stain resistance
- Synthetic blend pocketing and easy fit allows you to bend, stretch and twist in complete comfort
- Plenty of pockets to store the tools of the trade

PT60



Khaki *



Black



Brown



Charcoal

(women's - PT61)



Navy



White



Spruce Green



POLY-COTTON SPECIALIZED WORK PANT

These pants have no buttons to fumble with and are safe against any mess the food industry throws your way. Touchtex™ technology provides breathable comfort, lasting colors, stain resistance and soil release for industrial laundering. No-pill finish and easy fit wears well no matter what the task.

65% Polyester/35% Cotton

- No buttons mean fewer repairs and additional protection
- Plenty of pockets to store the tools of the trade
- Meets food processing requirements

PT56



White*

* = Color Shown



iQ SERIES COMFORT LIGHTWEIGHT PANT



- Protection: Arc Rating ATPV 9.0 calories/cm² NFPA 2112 Compliant
- Exclusive FR, 6.9 oz. (235 g/m²) **65% Cotton/35% Polyester**
- Ripstop Twill
- Jean style cut with full crotch gussets
- Wide/long belt loops to fit larger belts
- Double utility pocket for quick access to storage and cargo pocket with snap closure for secure storage
- Double articulated knees for ease of movement and increased mobility



Black*

QP14



EXCEL FR® COMFORTOUCH® DUNGAREE



- Protection: Arc Rating ATPV 16.0 calories/cm² NFPA 2112 Compliant
- Westex Ultrasoft® Flame-resistant 11.0 oz. (390 g/m²) **88% Cotton/12% Nylon**
- Water Repellant
- One-piece waistband with button closure and triple-needle felled outseam
- Five jean style pockets
- Two deep scoop pockets and two oversized reinforced hip pockets
- Rule pocket and utility pocket on right leg
- Hammer loop and utility pocket on left leg



Navy*

PLJ8



MEN'S WORK PANT



- Protection: Arc Rating ATPV 12.0 calories/cm² NFPA 2112 Compliant
- Westex Ultrasoft® Flame-resistant 9 oz. twill **88% Cotton/12% Nylon**
- Innerlined waistband with button closure
- Two slack-style front pockets, two set-in hip pockets and left hip w/ button closure



Navy*


PLW2





STRAIGHT FIT FR JEAN WITH STRETCH

Straight fit with stretch fabric. One-piece waistband with metal button closure not exposed to skin sits just below the waist with a straight leg fit. Two patch spade shaped hip pockets and scoop front pockets.

-  CAT
- Protection: Arc Rating ATPV 15 calories/cm² NFPA 2112 Compliant
- Flame-resistant 12 oz. (407 g/m²) **94% Cotton/ 5% Polyester/ 1% Spandex**

PSJ4



Sanded Denim*



RELAXED FIT JEAN

Relaxed fit with traditional rise sits at the natural waist. Relaxed seat and thigh. Slightly tapered leg fits over work boots. Deep front pockets. Antique brass rivets. Decorative stitching on back pocket. Leatherette logo patch on back pocket. **100% Cotton**

PD60



Prewashed Indigo*



LOOSE FIT DUNGAREE

Loose fit with updated rise sits slightly below the natural waist. Full cut through the seat and thigh. Straight leg fits over the top of work boots. Two deep, scoop-front pockets and two oversized hip pockets. Double rule pocket on right leg. Hammer loop on left leg. Bartacks at stress points. Decorative stitching on back pockets. Leatherette logo patch on back pocket. **100% Cotton**

PD80



Prewashed Indigo*



Stonewash

* = Color Shown

CAN'T FIND WHAT YOU'RE LOOKING FOR?

CONTACT US!

We offer a wide range of items!

- Women's Wear
- Dress Shirts
- Polos
- T-shirts
- Dealership Clothing
- Shorts
- Jackets
- Coveralls
- Hi Visibility
- Enhanced Visibility
- Flame Resistant
- Scrubs



WWW.MILLERSTEXTILE.COM

800-826-3164



PERFORMANCE KNIT FLEX SERIES POLO

Snag-resistant, wrinkle-resistant and moisture-wicking with superior color retention. **100% Polyester**

- Self-fabric convertible collar for a more casual appearance
- Double needle top-stitching for added strength
- Inset, double compartment sleeve pocket
- Straight hem with side vents, and full mesh underarm gusset for added coolness & mobility



SK92

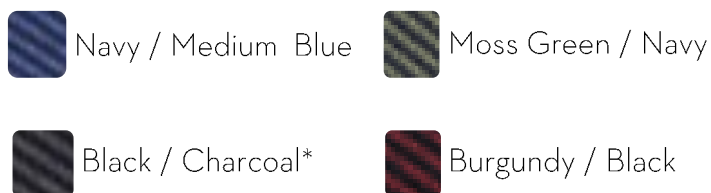
(women's - SK91)



PERFORMANCE KNIT TWILL POLO

This performance knit is sturdy enough to handle any task and comfortable enough to keep you focused on the job. It features a twill with a striped collar. **50% Polyester/50% Cotton**

- Soil release and shrinkage control keep you looking polished and professional
- Three tortoise-shell buttons for an unexpected yet stylish look
- Convenient left chest pocket for additional storage



SK52

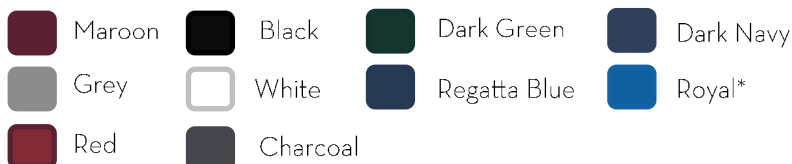
* = Color Shown



SNAG-RESISTANT POLO

Tough enough for most general work environments, this high-performance polo defies snags, resists wrinkles, fights odors and wicks moisture so you keep your professional edge all day long. **100% Polyester**

- Tag-free label and flat knit collar
- 3-button placket with dyed-to-match buttons
- Open hem sleeves with side vents



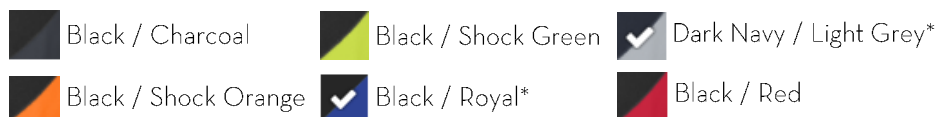
CS412

(women's - CS413)

SNAG-RESISTANT TWO WAY COLORBLOCK POCKET POLO

Snag-resistant, wrinkle-resistant, moisture-wicking and odor-fighting. For a durable, good-looking polo that doesn't skimp on performance. **100% Polyester**

- Tag-free label and flat knit collar
- 3-button placket with dyed-to-match buttons
- Open hem sleeves with side vents

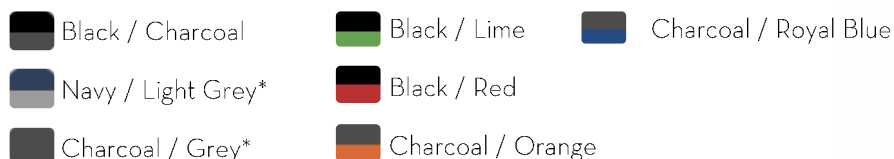


CS416

(women's - LST655)

TWO-TONED CREW SHIRT (LONG or SHORT SLEEVE)

Ripstop fabric is 75% stronger than other poplin workwear fabrics, with soil release, moisture management and great color retention. Concealed, no-scratch, button-front placket with a straight hem for a professional, untucked look. Sleeve utility pocket. **65% Polyester/35% Cotton**



SY10/20



INDUSTRIAL WORK SHIRT (LONG or SHORT SLEEVE)

With a classic look, this shirt is a closet staple for workers in nearly any occupation or industry. Touchtex™ technology provides enhanced soil release, color retention and a wickable finish, helping you look sharp day after day. Two-piece, lined collar with sewn-in stays. Six-button front with button at neck. Two button-thru, hex style pockets with bartacked pencil stall on left pocket. **65% Polyester/35% Cotton**



SP14/24

Charcoal*	Khaki	Postman Blue
Black	Light Green	Royal Blue
Burgundy	Light Grey	Spruce Green
White	Light Tan	Navy/Light Blue Twin Stripe
Grey*	Navy	

PRO AIRFLOW WORK SHIRT (LONG or SHORT SLEEVE)

Featuring a full-mesh back for maximum breathability and moisture wicking. Touchtex™ technology provides stain resistance and color retention. Utility pocket on left sleeve, specialty chest pockets, covered snaps, scooped hem, and reflective trim on the shoulder. **65% Polyester/35% Cotton (Body), 100% Polyester Stretch Knit (Mesh Back)**



SP3A/4A

Charcoal*	Navy
Light Grey*	

WORK SHIRT WITH MIMIX™ (LONG or SHORT SLEEVE)

Stretch flex panels on the back of this work shirt improve mobility and breathability, with ripstop fabric, moisture wicking, and soil release. Two button-thru, hex-style chest pockets with bartack reinforcement and pencil stall on left chest.



SX10/20

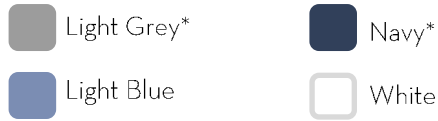
Charcoal	Black
Grey*	Navy*

* = Color Shown



POCKETLESS WORK SHIRT (LONG or SHORT SLEEVE)

Touchtex™ technology with superior color retention, soil release and wickability. Two-piece convertible collar with sewn-in stays. Seven stainless steel gripper closures. 65% Polyester/35% Cotton



SP16/26



WRINKLE-RESISTANT COTTON WORK SHIRT (LONG or SHORT SLEEVE)

Easy-care finish. Two-piece collar with sewn-in stays. Seven-button front including button at neck. Two button-thru, hex style pockets with bartacked pencil stall on left pocket. 100% Cotton



SC30/40



STRIPED WORK SHIRT (LONG or SHORT SLEEVE)

Touchtex™ technology provides enhanced soil release, color retention and a wickable finish, helping you look sharp day after day. 65% Polyester/35% Cotton



SP10/20



SHIRTS

MILLER'S
TEXTILE SERVICES



EXECUTIVE OXFORD DRESS SHIRT (LONG or SHORT SLEEVE)

Two-piece, lined, banded, button-down front. One hemmed spade-style pocket. Box-pleated back with tailored sleeve placket on long sleeve style. **60% Cotton/40% Polyester**



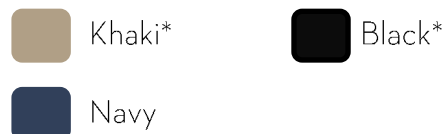
SR60/70

(women's - SR61/71)



POPLIN DRESS SHIRT (LONG or SHORT SLEEVE)

Touchtex™ technology with superior color retention, soil release, durable press and wickability. Two-piece, lined, banded, button down collar. Seven wood-tone button front with box-pleated back. Double-pleated sleeve with tailored placket and cuff. **65% Polyester/35% Cotton**



SP80/90

(women's - SP81/91)



ENHANCED VISIBILITY INDUSTRIAL WORK SHIRT (LONG or SHORT SLEEVE)

With enhanced visibility trim around the body, across the back, and down the sleeves, you'll stand out while you get the job done. Touchtex™ technology with color retention, soil release, and wickability. **65% Cotton/35% Polyester**

- This product does not comply with ANSI 107-2004 or ANSI 107-2010



SP14/24

* = Color Shown



HI-VISIBILITY COLORBLOCK RIPSTOP WORK SHIRT - TYPE O CLASS 1 (LONG or SHORT SLEEVE)

With UPF 40 and 360° visibility, you're protected day and night. Touchtex™ technology with superior color retention, soil release and wickability.

65% Polyester/35% Cotton

- UPF 40 rating for extra protection from harmful UVA and UVB rays
- 360° visibility with front and back 2 in. silver reflective striping
- Exclusive Ripstop Fabric is lightweight and breathable but 75% stronger than common workwear fabrics



Fluorescent Yellow / Charcoal*



SY70/80

HI-VISIBILITY RIPSTOP WORK SHIRT - TYPE R CLASS 2 (LONG or SHORT SLEEVE)

Designed with a fluorescent yellow shade and reflective silver striping, you're in plain sight in all levels of lighting. Touchtex™ technology with superior color retention, soil release and wickability.

65% Polyester/35% Cotton

- UPF 40 rating for extra protection from harmful UVA and UVB rays
- 360° visibility with front and back 2 in. silver reflective striping
- Exclusive Ripstop Fabric is lightweight and breathable but 75% stronger than common workwear fabrics



YG – Fluorescent Yellow/Grey*



YN – Fluorescent Yellow/Navy*



SY24/14

ENHANCED VISIBILITY vs. HIGH VISIBILITY

ENHANCED VISIBILITY refers to garments that are outfitted with retro-reflective tape. These garments are not typically ANSI compliant and are for workers in lower risk environments that still desire added visibility.

HIGH VISIBILITY (HI-VIS) workwear is held to specific ANSI 107 standards and is broken down into different types and classes. The ANSI/ISEA 107 American National Standard for High-Visibility Safety Apparel is a standard providing guidelines and requirements for garment design.



MIDWEIGHT FR DRESS UNIFORM SHIRT



- **2 CAT**
- Protection: Arc Rating ATPV 8.6 calories/cm² NFPA 2112 Compliant
- Westex Ultrasoft® Flame-resistant 7 oz. (235 g/m²) **88% Cotton/12% Nylon**
- Topstitched cuff with button closure, a tailored sleeve placket, and a banded, button-down collar



Grey



Light Blue



Silver Grey



Khaki*



Navy

SLU2



iQ SERIES® ENDURANCE FR ENHANCED VISIBILITY WORK SHIRT

- **2 CAT**
- Protection: Arc Rating ATPV 9.0 calories/cm² NFPA 2112 Compliant
- Westex G2™ Flame-resistant 7 oz. (235 g/m²) Ripstop Twill **65% Cotton/35% Polyester**
- Gas monitor pocket at front shoulders for convenient storage and patch chest pocket with integrated pencil stall
- Featuring a topstitched collar and cuffs with two-button adjustable closures and a hemmed front placket with button closure
- Full underarm gussets allow for unrestricted movement



Grey*

QS40



EXCEL FR® COMFORTOUCH® ENHANCED VISIBILITY UNIFORM SHIRT

- **2 CAT**
- Protection: Arc Rating ATPV 8.6 calories/cm² NFPA 2112 Compliant
- EXCEL FR® ComforTouch® Flame-resistant 7 oz. (235 g/m²) **88% Cotton/12% Nylon**
- Two chest pockets with button flaps and sewn-in pencil stall, placket front with button closure, topstitched cuff with button closure, tailored adjustable sleeve placket, and a banded, topstitched collar



Khaki



Light Blue*

SLDT

* = Color Shown



“We show up on time, do what we say,
finish what we start... and have fun doing it.”



SPECIALIZED COTTON WORK SHIRT

Ideal for workers in food processing. This shirt features a separate two-piece yoke and seven stainless steel gripper closures.

- Pocketless
- Gripper closure on sleeve cuff

SC16NV - 100% Cotton

SP16WH - 65% Polyester/35% Cotton

(women's - SP15WH)



TEN-BUTTON CHEF COAT (PEARL-BUTTON or KNOT-BUTTON)

Look as fresh as your meals. This chef coat is double breasted with 10 buttons. 100% Polyester

- Left chest pocket
- Thermometer pocket on left sleeve

0425BK - Ten-Pearl Button

0427BK - Ten-Knot Button

0423WH - Ten-Pearl Button

0421WH - Ten-Knot Button



GRIPPER FRONT BUTCHER COAT

To keep you covered and comfortable for as long as you are on the clock. 65% Polyester/35% Cotton

- One interior left breast pocket
- Two exterior lower pockets
- Side vent openings

KT18



	Bib w/ No Pockets	Bib w/ Pockets	Full Bistro w/ Pockets	Half Bistro w/ Pockets	Waist Bistro w/ Pockets
White	200CL		209CL		
Black	234CL	233CL	210CL	212CL	204CL
Red	215CL				
Green	265CL				
Navy	291CL	290CL			





TABLE LINENS



		42" x 42"	52" x 52"	6' x 6'	7' x 7'	90" x 90"	52" x 70"	52" x 96"	52" x 114"	90" x 132"	90" x 156"	90" round	120" round	132" round
CORE	White	X	X	X	X	X	X	X	X	X	X	X	X	X
	Black	X	X	X	X	X	X	X	X	X	X	X	X	X
	Vanilla		X	X	X	X	X		X	X	X		X	X
PREMIUM	Sandalwood		X	X	X	X	X		X					
	Red		X	X	X	X			X					
	Burgundy		X	X		X			X					
	Royal Blue					X			X					
	Navy		X	X		X			X					
	Green		X			X			X					
	Gray		X	X	X	X			X					



Actual colors may vary from picture due to computer and/or printer settings.

*Premium colors may be subject to limited quantities and additional charges.

COMMONLY USED TABLE SIZES

RECOMMENDED TABLE LINEN SIZES

Table Size/Shape	Table Dimensions	Floor Length	Lap Length
30" Round Table	30" diam x 30" H	90" Round	52"x52" Square
48" Round Table	48" diam x 30"H	90" Round	71" x 71" Square
60" Round Table	60" diam x 30"H	120" Round	90" Round
72" Round Table	72" diam x 30"H	132" Round	108" Round
6' Banquet Table	72'Lx30" W x 300"H	90" x 132" Banquet	52" x 96"
8' Banquet Table	96'L X 30"W X 30'H	90" x 156" Banquet	52" x 114"



Napkins

CORE COLORS

	White		Orange
	Black		Red
	Vanilla		Burgundy
	Sandalwood		Orchid
	Brown		Royal Blue
	Gold		Navy
	Yellow		Green

Actual colors may vary from picture due to computer and/or printer settings.

PREMIUM COLORS

	Pink		Red Stripe
	Purple		Orange Stripe
	Medium Blue		Green Stripe
	Seafoam		Navy Stripe
	Medrite Gray		Black Stripe
	Charcoal		White Stripe
			Gray with White Stripe*

*Premium colors may be subject to limited quantities and additional charges.





AIR FLEX

- Anti-fatigue design with beveled edges
- Great for stationary workstations

Sizes: 2'x3'
3'x5'

100% Nitrile Rubber



SCRAPER

- Slip-resistant design for use outside or in wet areas
- First line of defense in removing and trapping dirt, dust, rain and snow

Sizes: 3'x5'
4'x6'

100% Nitrile Rubber

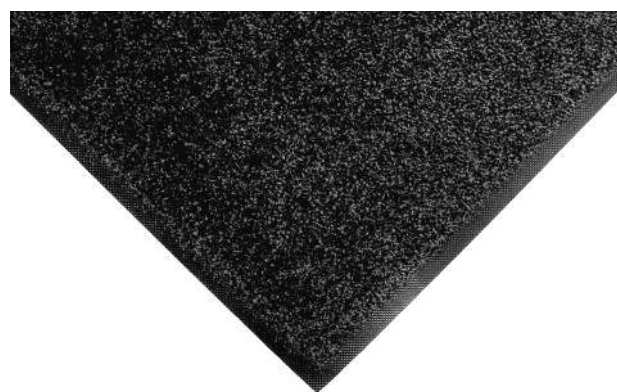


COMFORT FLOW

- Flow-through design with anti-fatigue properties and beveled edges
- Great for workstations where operator needs to move around

Sizes: 3'x5'
3'x9'

100% Nitrile Rubber



WALK-OFF

- Slip-resistant backing
- Carpet surface stops dirt, dust and moisture to provide a safer walking surface

Sizes: 2'x3'
3'x5'
4'x6'
3'x10'

100% Nitrile Rubber



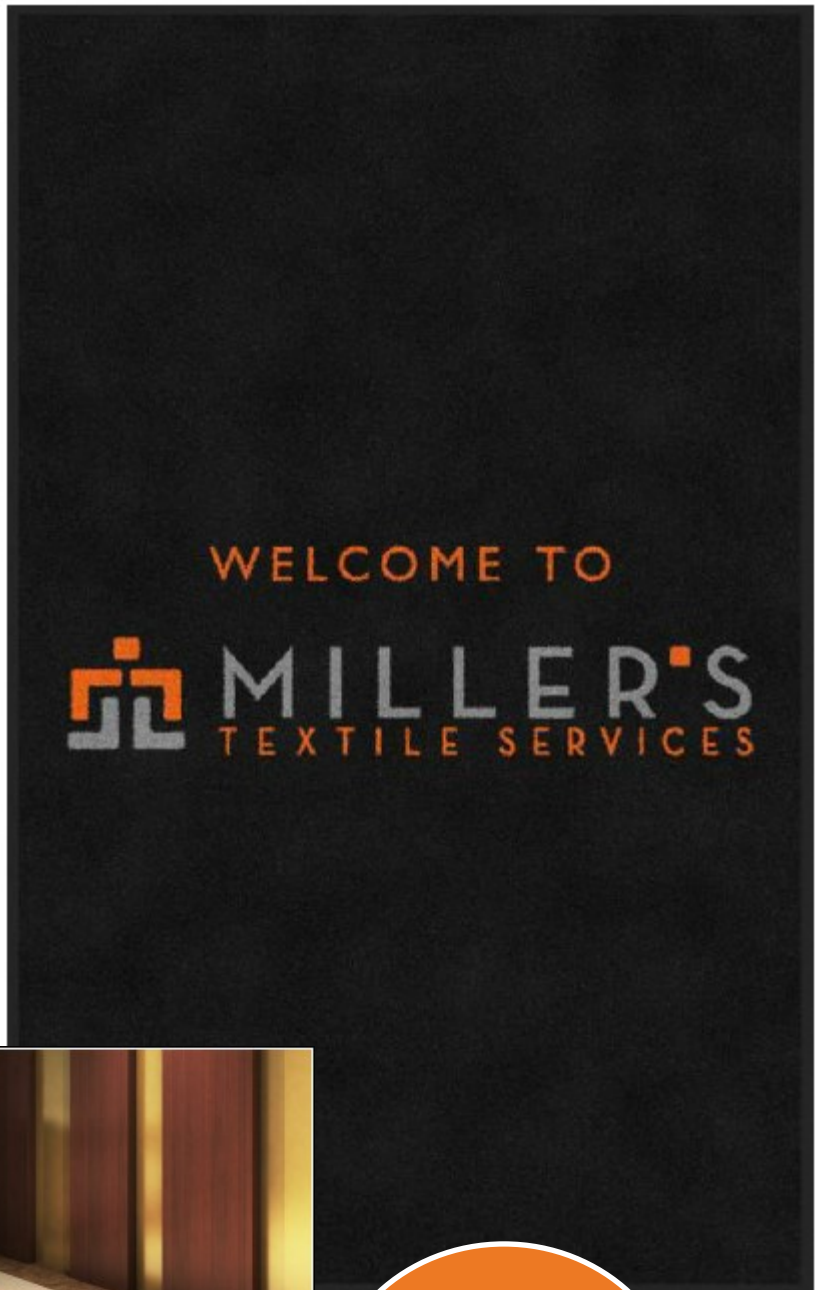


CUSTOM LOGO MATS

Custom logo mats are the perfect way to promote your company's image. Logo mats combine the benefits of a floor mat with an eye-catching design that can enhance branding and marketing efforts. Miller's Textile Services can help you find the best type of logo mat based on the complexity of your design and it's intended function. Produced with commercial-grade materials and using state-of-the-art manufacturing technology, our logo floor mats are made to last and offer amazing performance while still displaying an attractive image.

- Completely customized based on computer artwork
- Great for branding and messaging
- Cleated 100% Nitrile Rubber backing to avoid movement

custom sizes available



YOUR
LOGO
HERE



BAR MOPS (BAR TOWELS/TERRY CLOTHS)

- Heavy weight construction
- Size: 16"x19"

Best used for - Bar Spills, Table & Counter Cleanup

*Delivered bagged



GRILL WIPES (GRILL PADS)

- Heavy weight construction
- Size: 10"x14"

Best used for - Grill & Grill Supplies Cleaning

*Delivered bagged



MICROFIBER TOWELS

- Heavy weight construction, Reduced Lint
- Size: 16"x16"

Best used for - Glasses, Glass Countertops, Stainless Steel

*Delivered bagged



FOUNTAIN TOWELS

- Heavy weight construction
- Size: 15"x26"

Best used for - Kitchen Cleanup

*Delivered bagged



SHOP TOWELS

- Heavy weight construction
- Size: 18"x18"

Best used for - Oil Spills, Grease Cleanup

*Delivered bagged



GREEN HAND TOWELS (GREEN GOLF TOWEL)

- Heavy weight construction
- Size: 16"x27"

Best used for - Hair Salons, Golf Courses





DUST MOP

- Infinity twist to reduce floor care labor
 - Pre-framed for ease of use

Sizes: 24", 36", 48", 60"



WET MOP

- Banded construction to reduce floor care labor
 - Looped ends to avoid fraying

Size: 24" length w/ 9" head band



MICROFIBER WET MOP

- Microfiber can clean more effectively, as it reaches into surface pores and crevices
 - Helps reduce cross-contamination





HOSPITALITY



At Miller's Textile Services, we offer a wide range of hospitality products from Bed Sheets to Bath Towels.



Washcloths



Hand Towels



Bath Towels



Premium Bath Towels



Bed Sheets & Pillow Cases

Sizes Available:

- Single Flat Sheets
- Double Flat Sheets & Double Fitted Sheets
- Queen Flat Sheets & Queen Fitted Sheets
- King Flat Sheets & King Fitted Sheets

CONTACT US for specific dimensions



HEALTHCARE



Linen & Blankets

- Green Fitted Sheets*
- Blue Single Sheets*
- White Fitted Knitted Contour Sheets
- Incontinent Pads
- Thermals
- Bath Blankets



Medical Towels

- Doctor Towels Size: 15"x30"
(WHITE)
- Surgical Towels Size: 15"x30"
(BLUE)



Patient Gowns

- ISO Gowns*
- 3 ARM ISO Gowns
- IV Gowns w/ Plastic Snap*
- 3XL Gowns
- OR Gowns
- Pediatric Gowns
- Patient Gowns

Coats

- Lab Coats*
- Doctor Coats



Scrubs

- Available in many colors and styles!



FIRST AID



- Meets ANSI/ISEA Z308.1-2015 Class B compliance standards
- Managed First Aid Program – built on monthly service excellence to maintain compliance and service accuracy
- High quality AeroPlast™ adhesive bandages and tape with exclusive SUPABOND™ adhesive
- Complete injury specific modules for fastest response and treatment time
- Medications are available to be added: Pain Reliever, Ibuprofen, Non Aspirin, Cold Relief, Antacid
- For food processing, available with high visibility, waterproof blue metal detectable bandages



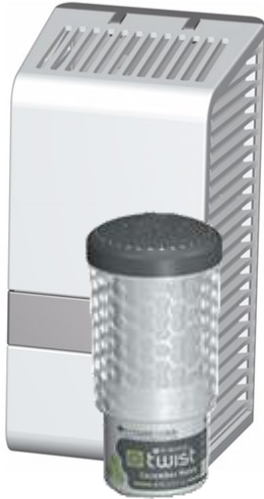
MOTORIST FIRST AID KITS

Available separately

- Automated External Defibrillator
- First Aid Cabinet
- Eyewash Station



60-DAY TWIST AIR FRESHENER



- Reliable, gravity-fueled system; doesn't rely on batteries, fuel cells or any other artificial means
- Premium fragrances that last 60 days
- Odor counteractant system to effectively fight odor
- VOC and REACH compliant
- Covers 6000 cubic feet or an average 2-3 stall restroom
- Choose from multiple scent intensities to see what fragrance is right for your space, and coordinate scents with Toilet Bowl Clips and Urinal Screens products

Cucumber Melon

Tropical Paradise | Mountain Breeze

Orange Grove

LIGHT

MODERATE

INTENSE

TOILET BOWL CLIPS

Toilet Bowl Clips provide effective odor control for any toilet, as well as garbage can, restroom stall, or similar surface.



URINAL SCREENS

Urinal Screens deodorize urinals for 30 days, helping to eliminate one of the major sources of odors in many restrooms. Shape conforms to the urinal floor and features tall posts to eliminate splash back.



URINAL MATS

Urinal Mats provide an attractive, safe, and hassle-free floor protectant that minimizes odors. The Seep-Guard barrier eliminates urine seepage and protects your floor from damage caused by uric acid. The anti-microbial treatment protects against odors and degradation. Designed for 30-day usage with an easy-to-read TimeStrip that indicates when the mat needs replaced. Eco-friendly with PET fabric that is made from 100% post-consumer recycled plastic bottles.



NO ALCOHOL HAND SANITIZER



Foaming No Alcohol Hand Sanitizer is an effective and convenient way to sanitize hands when soap and water are not available. Our sanitizer is formulated with 0.13% Benzalkonium Chloride to eliminate 99.99% of common germs within 15 seconds. It does not dry out skin like alcohol sanitizers can and is dye free, with a light linen fragrance. Ideal where a non-alcohol product is desired including schools, public facilities, stadiums and arenas and nursing homes. Made in the USA. **60848**

LUXURY HAND SOAP



A luxurious pink foam soap with appealing tropical fragrance, our Foaming Luxury Hand Soap is our most popular general purpose hand soap. It quickly cleans away light to medium soils with a rich, soft foam. Contains Aloe and Vitamin E for skin moisturizing. Ideal for use in any environment, including schools and universities, restaurants, office buildings and healthcare facilities. **60857**

ALCOHOL HAND SANITIZER



Foaming 62% Alcohol Hand Sanitizer dispenses with a thick, rich foam. This fast-acting product kills 99.99% of common germs within 15 seconds – just rub into hands until dry. An effective and convenient hand sanitizer, it's ideal when soap and water are not available. The 62% ethyl alcohol formula meets CDC recommendations for proper hand hygiene. NSF E3 registered and Green Seal® Certified. **68841**

ANTI-BACTERIAL HAND SOAP



Foaming Advanced Antibacterial Hand Soap contains 0.13% Benzalkonium Chloride to kill 99.99% of the most common germs that can cause illness. This rich foam cleans away light to medium soils. It's specially formulated without Triclosan and contains Aloe and Vitamin E to help nourish the skin. **61293**



FOAM WALL MOUNT DISPENSER



This foam dispenser is a contemporary curved design and efficient top-dispensing feature. The upper valve placement and easy-view dispensing mean no dripping and less waste. The large front window and product identification sticker make it easy to know when it's time to refill. With a wide variety of soaps and sanitizers to choose from, you'll find the perfect hand cleaning product. Eco-responsible pouch refills in 1000 mL.

GRAY - 60858

BLACK - 60891

SUPER SCRUB



Super-Scrub is a blend of surfactants and synthetic scrubbers that effectively removes heavy soils. The scrubbers, along with synthetic and plant oil-based solvents, removes stains from hands including motor oil, carbon black, automotive fluids and adhesives. Enhanced with Aloe and moisturizers to help prevent dry skin. Ideal for use in industrial and manufacturing settings including automotive repair shops.

SUPER SCRUB - 62019

ORANGE SCRUB - 62030

SPRAY HAND SANITIZER



- Non-Aerosol 8oz Spray - Utilizes BOV AIR Powered Technology
 - No water or towels needed
 - Leaves no residue or lasting odor
- Active Ingredients include Isopropyl Alcohol 75% v/v
- Inactive Ingredients include Hydrogen Peroxide, Glycerin, and Purified Water USP

SPRAY - 8SA



Tackle Germicidal Foam

EPA Registered disinfectant and cleaner. Excellent for restroom maintenance. Produces stable foam with user friendly fragrance.

60977 12/case



Clear Glass Foam

Easy to use cleaner and polish uses a clinging foam to break up soils and hold them even on a vertical surface. Never any drips, runs, or streaks. Formulated with ammonia to get glass "squeaky" clean.

60976 12/case



Stainless Steel Polish & Cleaner

Cleans, Polishes and Protects. Contains no acid or abrasives. 12 oz.

60941 12/case



Disinfectant Spray

A hospital grade multi-purpose disinfectant for use on hard, non-porous environmental surfaces and soft spot surface sanitizer applications. Controls mold and mildew. Eliminates odors. Kills 99.9% germs.

CL101 12/case



Pro-Kling Bowl Cleanse

EPA Registered disinfectant with mild acid for use in toilet bowls and urinals. Detergent thickened so it stays where you put it. Detergent produces suds that clean and remove what the acid has loosened. Rinses freely and no fumes.

60962 12/case



Laser Degreaser

A concentrated non-butyl degreaser cleaner formulated to penetrate tough soils using a special combination of emulsifiers and detergents. Safe for removing grease, oils, and tough soil buildup from a variety of industrial surfaces. Holds grease and oil in suspension for extended periods.

60974 4/case

Miller's Textile Services carries over 500 products to help maintain a clean and healthy work environment in your facility.



Husky 803 Sanitizer

EPA Registered Sanitizer. Use in 3rd sink as a final sanitizer or on food prep surfaces to sanitize. Dilutes at .25 oz. per gallon of water. One gallon makes 512 gallons of usable sanitizer. No rinsing required.

60742 4/case



Husky 440 Dishwashing Concentrate

Highly concentrated, high-suds dishwashing liquid detergent with Aloe Vera effectively cleans dishes, pots and pans. This neutral-pH dishwashing soap is gentle on hands and rinses freely.

60953 4/case



Spryte Disinfectant

Concentrated, high fragrance quaternary ammonium disinfectant cleaner. Versatile cleaner that exhibits excellent cleaning properties. EPA Registered as a Broad Spectrum Disinfectant cleaning product.

60816 4/case



Clearmop Concentrate

Medium Duty Detergent for damp mopping floors. Superior wetting agent to magnetize your wet mop. Makes your mop seek soil and oil for removal. Dilutes at 2 oz. per gallon of water making it very economical. Clean fragrance.

60971 4/case

GARBAGE CAN LINERS

Low Density Black Liners		
62068	30X36	1.2 mil
62077	33X40	1.2 mil
62078	40X46	1.5 mil
62079	43X47	1.5 mil
62080	38X58	1.5 mil
62049	38X58	2.0 mil



High Density Clear Liners		
62081	24X24	Micron 6
62082	24X33	Micron 6
62083	30X37	Micron 8
62084	33X40	Micron 16
62085	40X48	Micron 14
62086	43X48	Micron 16
62087	38X58	Micron 17

OTHER SIZES AVAILABLE BY SPECIAL ORDER

PAPER HAND TOWELS



HANDS FREE DISPENSER

Dispenser - **61091**

Natural Roll Towel - **61092**

White Roll Towel - **61093**



PUSH BAR ROLL TOWEL DISPENSER

Dispenser - **61015**

Natural Roll Towel - **61096**

White Roll Towel - **61097**



CENTER PULL ROLL TOWEL DISPENSER

Dispenser - **61098**

1 PLY 8"x400' - **61099**

2 PLY 8"x600' - **60510**



MULTIFOLD C FOLD DISPENSER

Dispenser - **61125**

Natural Towel 4000/case - **60878**

White Towel 4000/case - **68040**



AUTO CUT ROLL TOWEL DISPENSER

Dispenser - **61075**

Brown Roll Towel - **61096**

White Roll Towel - **61097**



TOILET TISSUE

STANDARD ROLL DISPENSER

Dispenser - **61078**

Premium Bath Tissue 2PLY - **61116**

Economy Bath Tissue 2PLY - **61083**



FOUR ROLL DISPENSER

Dispenser - **61069**

Premium Mini Tissue 1PLY - **61070**

Premium Mini Tissue 2PLY - **61071**



TWIN JUMBO ROLL DISPENSER

Dispenser - **61077**

9"x750' Roll 2PLY - **61085**



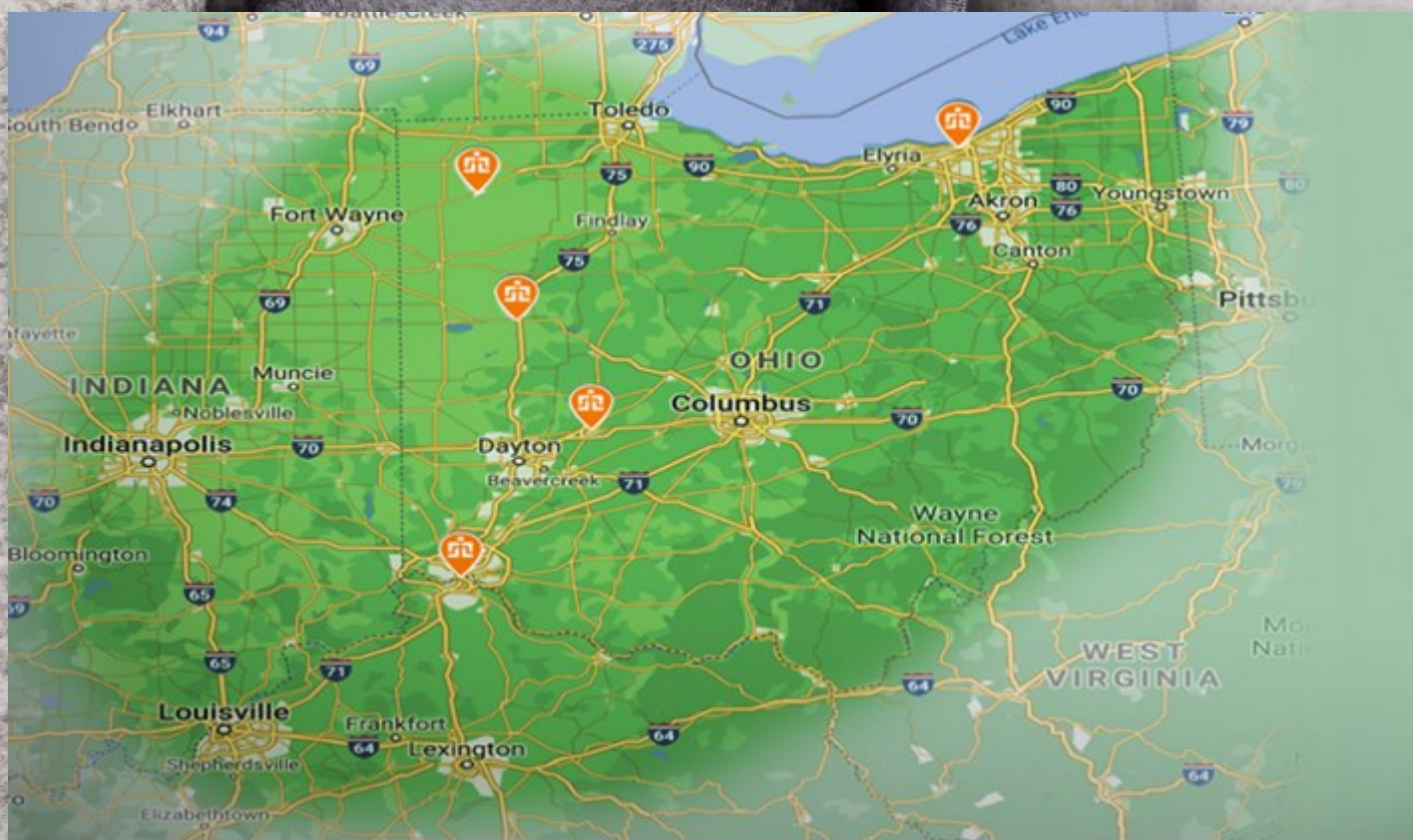
SINGLE JUMBO ROLL DISPENSER

Dispenser - **61076**

9"x750' Roll 2PLY - **61085**



We have the privilege of serving customers across a four-state area including Ohio, Indiana, southern Michigan and northern Kentucky. Whether you are looking for uniforms, linens and towels, healthcare, mats, facility services or other promotional items, our team at Miller's is dedicated to exceeding your expectations.



800-826-3164

WWW.MILLERSTEXTILE.COM